



TWENTY THIRTEEN
BUILT BY BIRD

SAFETY

PEOPLE

PROJECTS

PROFITS



GAME OVER

INSERT COIN TO CONTINUE

**There's no restart button for your life.
Make safety a habit.**

NORTH AMERICAN OCCUPATIONAL
SAFETY & HEALTH WEEK • May 4 - 10, 2014



SAFETY LEADERSHIP
BUILT BY BIRD

SAFETY

PEOPLE

PROJECTS

PROFITS



SAFETY LEADERSHIP
BUILT BY BIRD



TRUST
BUILT BY BIRD

SAFETY

PEOPLE

PROJECTS

PROFITS



TRUST
BUILT BY BIRD

SAFETY

PEOPLE

PROJECTS

PROFITS



TRUST
BUILT BY BIRD

SAFETY

PEOPLE

PROJECTS

PROFITS



TRUST
BUILT BY BIRD

SAFETY

PEOPLE

PROJECTS

PROFITS



TRUST
BUILT BY BIRD

SAFETY

PEOPLE

PROJECTS

PROFITS



TRUST
BUILT BY BIRD

SAFETY

PEOPLE

PROJECTS

PROFITS



TRUST
BUILT BY BIRD

SAFETY

PEOPLE

PROJECTS

PROFITS



TRUST
BUILT BY BIRD



CHALLENGING PROJECTS
BUILT BY BIRD

SAFETY

PEOPLE

PROJECTS

PROFITS



CHALLENGING PROJECTS
BUILT BY BIRD

SAFETY

PEOPLE

PROJECTS

PROFITS

An aerial photograph of a coastal town, likely Colby, with a large body of water and mountains in the background. The town features a mix of residential and commercial buildings, including a prominent red-roofed structure. A large ship is visible in the water on the right side of the image.

BIRD Colby

CHALLENGING PROJECTS
BUILT BY BIRD

SAFETY

PEOPLE

PROJECTS

PROFITS

A high-angle photograph of a large industrial facility, likely a water treatment plant. The image shows several large, light blue horizontal pipes running across the frame. These pipes are connected by various valves, flanges, and smaller pipes. Yellow metal walkways with railings are visible on the left side, providing access to the equipment. The background shows concrete walls and some electrical control panels. The overall scene is well-lit and organized.

Nason

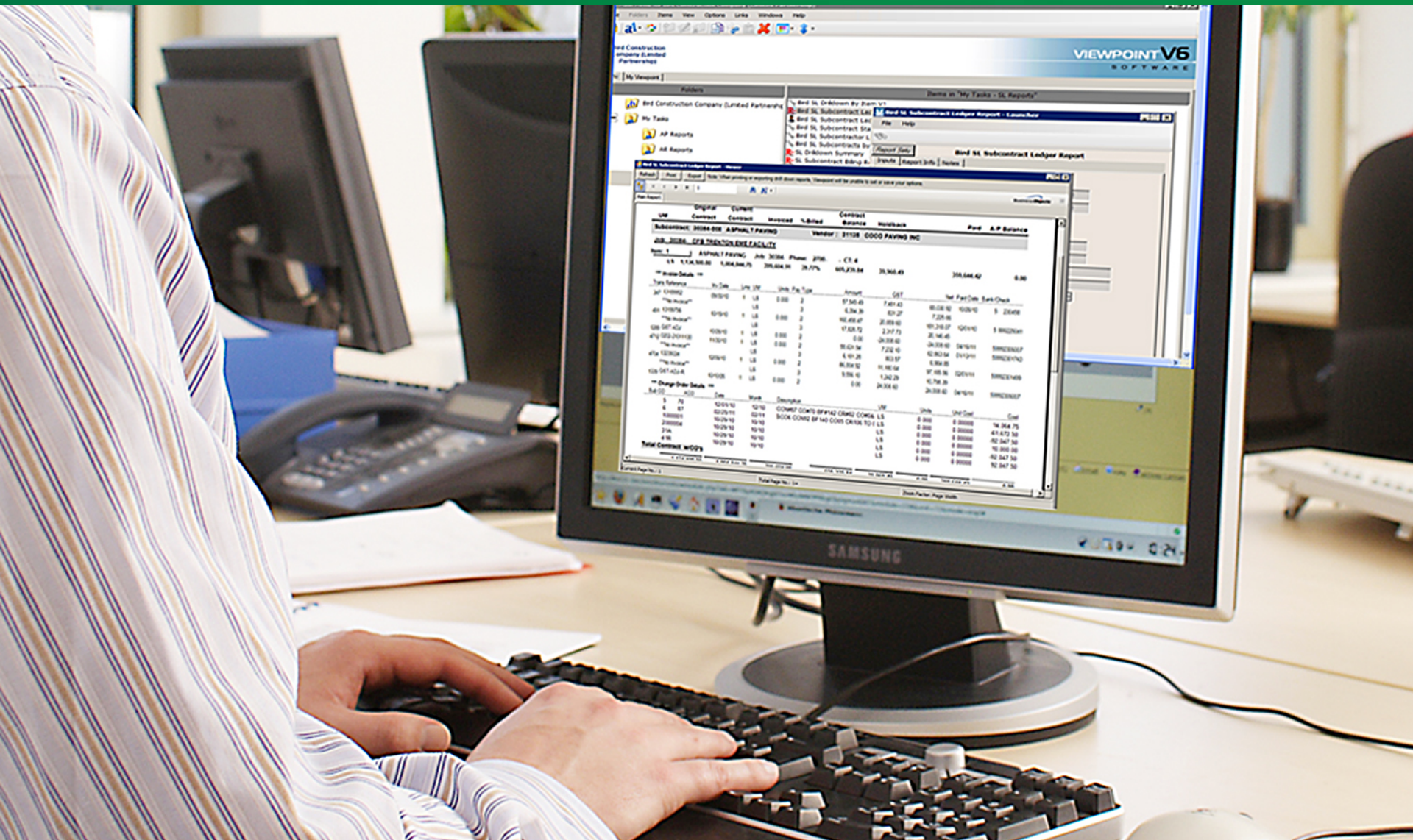
CHALLENGING PROJECTS
BUILT BY BIRD

SAFETY

PEOPLE

PROJECTS

PROFITS



CHALLENGING PROJECTS
BUILT BY BIRD

SAFETY

PEOPLE

PROJECTS

PROFITS



MUSKRAT FALLS HYDROELECTRIC GENERATING STATION

CHALLENGING PROJECTS
BUILT BY BIRD

SAFETY

PEOPLE

PROJECTS

PROFITS



SURGEON LIEUTENANT-COMMANDER W. ANTHONY PADDON BUILDING

CHALLENGING PROJECTS
BUILT BY BIRD

SAFETY

PEOPLE

PROJECTS

PROFITS

An aerial photograph of a large, multi-story red brick building with white accents and dormer windows, identified as the Varsity Drive Student Residence at St. Francis Xavier University. The building features two prominent white cupolas with gold domes. It is situated on a green lawn with some trees in the foreground and a line of trees in the background under a cloudy sky.

ST. FRANCIS XAVIER UNIVERSITY VARSITY DRIVE STUDENT RESIDENCE

CHALLENGING PROJECTS
BUILT BY BIRD

SAFETY

PEOPLE

PROJECTS

PROFITS



SAINT JOHN LAW COURTS

CHALLENGING PROJECTS
BUILT BY BIRD

SAFETY

PEOPLE

PROJECTS

PROFITS



THE BERCZY CONDOMINIUMS

CHALLENGING PROJECTS
BUILT BY BIRD

SAFETY

PEOPLE

PROJECTS

PROFITS



WINNIPEG POLICE SERVICE WEST DISTRICT STATION

Winnipeg Police Service
West District Station
Service de police de Winnipeg
Poste du district de l'ouest
2321 Main Ave
2321 Avenue Main

CHALLENGING PROJECTS
BUILT BY BIRD

SAFETY

PEOPLE

PROJECTS

PROFITS



GENESIS PLACE PHASE III

CHALLENGING PROJECTS
BUILT BY BIRD

SAFETY

PEOPLE

PROJECTS

PROFITS



ENBRIDGE CLIPPER EXPANSION

CHALLENGING PROJECTS
BUILT BY BIRD

SAFETY

PEOPLE

PROJECTS

PROFITS



CANADA POST PACIFIC PROCESSING CENTRE

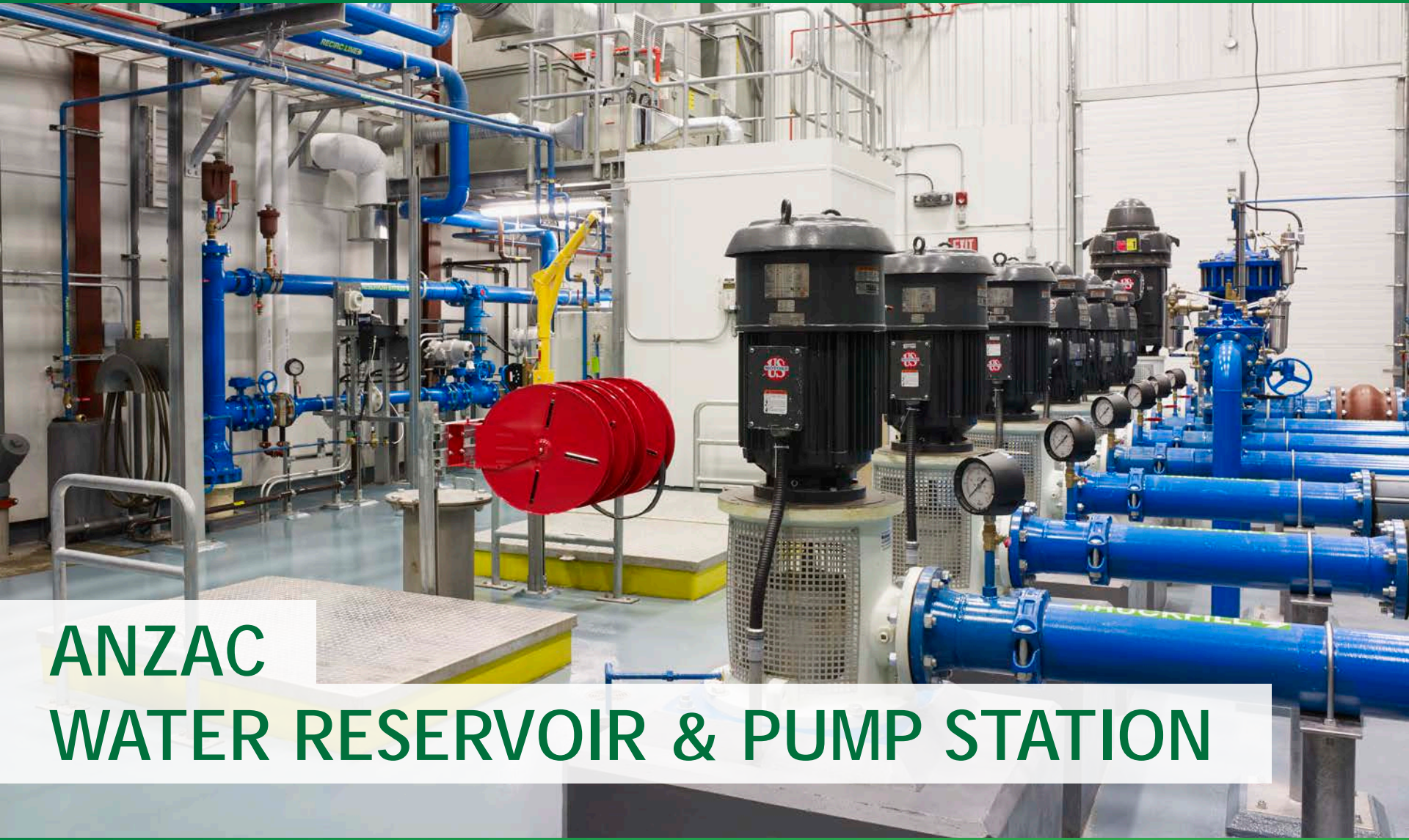
CHALLENGING PROJECTS
BUILT BY BIRD

SAFETY

PEOPLE

PROJECTS

PROFITS



ANZAC WATER RESERVOIR & PUMP STATION

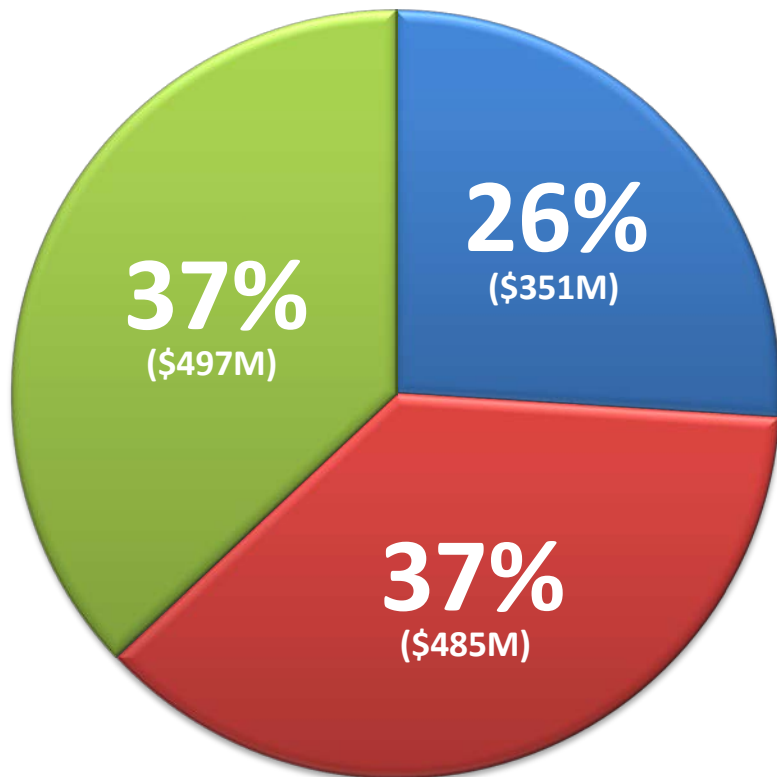
CHALLENGING PROJECTS
BUILT BY BIRD

TWELVE MONTHS 2013

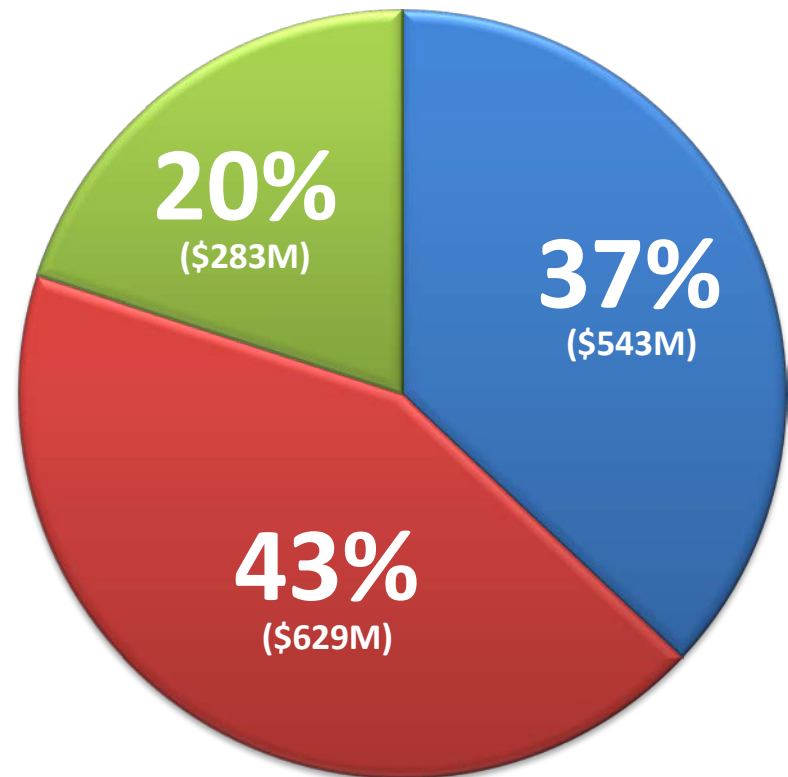
TWELVE MONTHS 2012

Revenue	\$ 1,331.7 million	\$ 1,454.9 million
Income Before Tax	\$ 15.3 million	\$ 81.0 million
Net Income	\$ 12.1 million	\$ 58.2 million
Working Capital	\$ 120.4 million	\$ 154.4 million
New Awards	\$ 1,518.3 million	\$ 1,293.2 million
Backlog (w/o CM)	\$ 1,268.7 million	\$ 1,073.9 million
Adjusted Net Income	\$ 14.6 million	\$ 62.0 million
Adjusted Earnings per Share	\$ 0.34	\$ 1.47

2013



2012



YOUR INVESTMENT
BUILT BY BIRD

SAFETY

PEOPLE

PROJECTS

PROFITS



YOUR INVESTMENT
BUILT BY BIRD

SAFETY

PEOPLE

PROJECTS

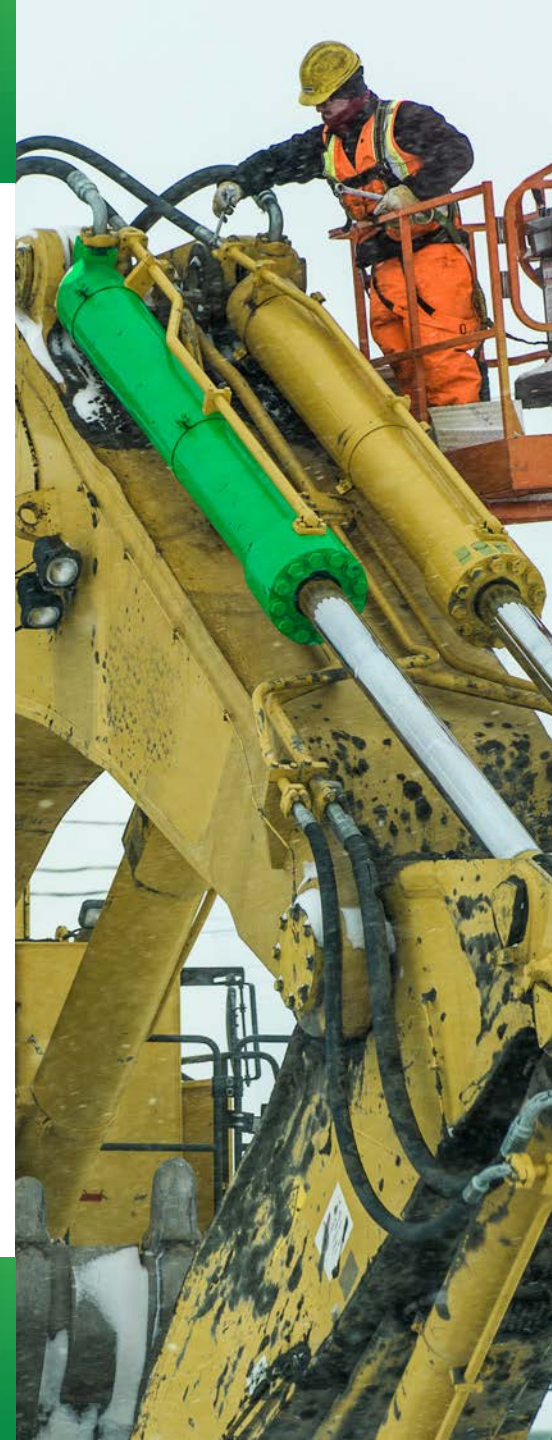
PROFITS

A photograph of two construction workers in safety gear (hard hats, safety glasses, and high-visibility vests) standing on a construction site. They are looking out over a large, open area with dirt roads and some vegetation. The worker on the right is pointing towards the horizon. The background shows a clear blue sky with some clouds and distant mountains.

LOOKING FORWARD

YOUR INVESTMENT
BUILT BY BIRD

SAFETY LEADERSHIP
TRUST
CHALLENGING PROJECTS
YOUR INVESTMENT
BUILT BY BIRD





THANK YOU

TWENTY THIRTEEN
BUILT BY BIRD